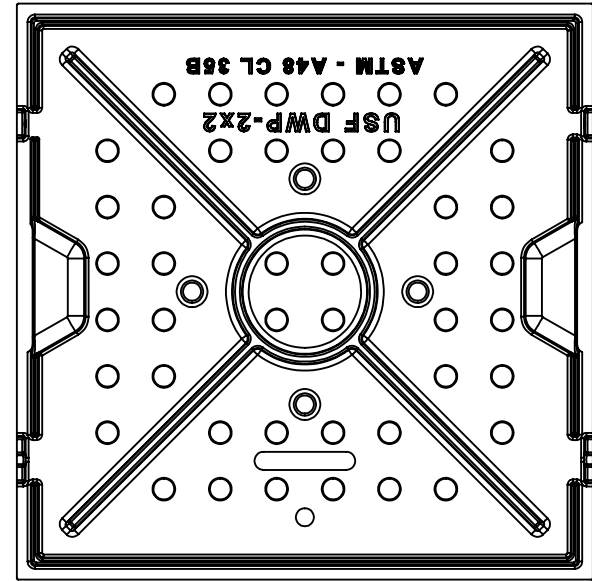
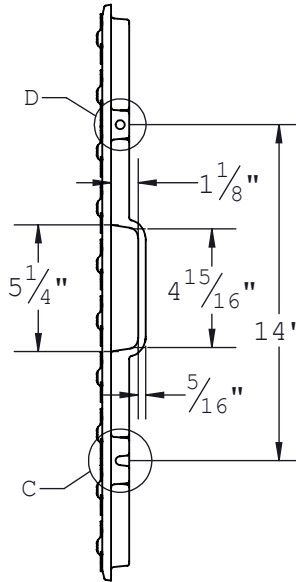
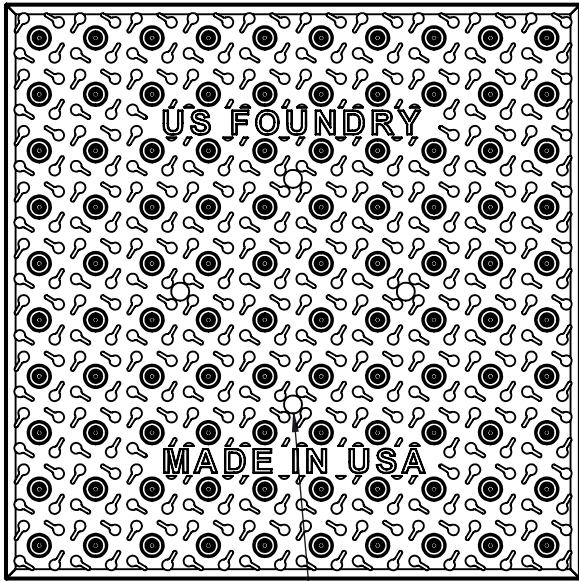
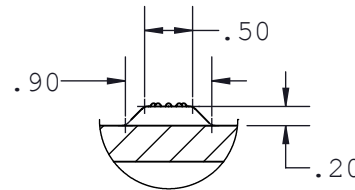
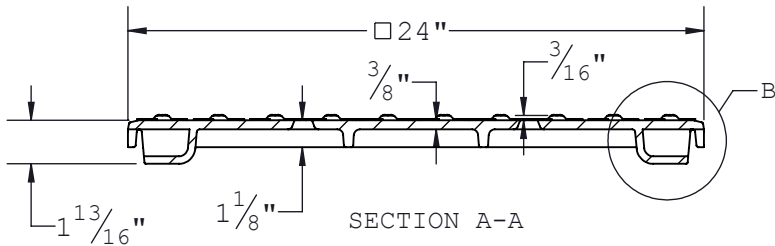


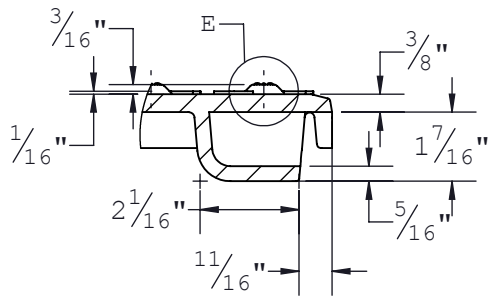
THE INFORMATION CONTAINED IN THIS DRAWING IS THE SOLE PROPERTY OF U.S. FOUNDRY & MANUFACTURING CORP. ANY REPRODUCTION IN PART OR AS A WHOLE WITHOUT THE WRITTEN PERMISSION OF U.S. FOUNDRY & MANUFACTURING CORP. IS PROHIBITED. U.S. FOUNDRY & MANUFACTURING CORP. RESERVES THE RIGHT TO MAKE MODIFICATIONS TO DESIGN WITHOUT PRIOR NOTICE. DRAWING IS UNCONTROLLED WHEN PRINTED. WEIGHTS AND DIMENSIONS ARE PROVIDED FOR REFERENCE ONLY © 2015 US FOUNDRY AN EAGLE MANUFACTURING COMPANY



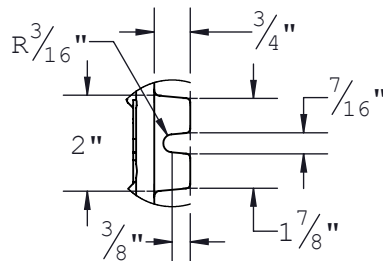
4x  $\phi 3/4$ " Vent Holes



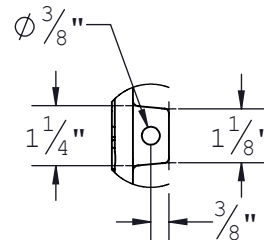
DETAIL E



DETAIL B



DETAIL C



DETAIL D



**US FOUNDRY**

AN EAGLE MANUFACTURING COMPANY © 2015 All Rights Reserved

8351 NW 93rd Street  
Medley, FL, 33166-2025  
ph: 1-800-432-9709  
fax: 305-887-9429  
www.usfoundry.com

**USF Detectable Warning Plate**  
2' x 2'

MATERIAL:	Gray Cast Iron	ASTM-A48 Class 35B
ITEM:	BAAN #	DRAWING
Cover	8120180	DATE 03/31/2015
		DRAWN BY OD/AB
REV 0	DATE	REV BY
		QUOTE # 4110

Customer Drawing