

TRENCH GRATE SOLUTIONS

FRAME TYPES

We recognize that all job sites are different and require various options. To accommodate this we offer two types of frames

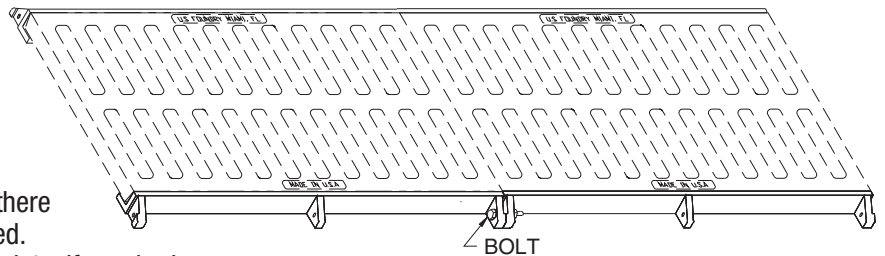
USF 6560 SERIES CAST IRON FRAMES

Frames are supplied in 2' lengths.

These frames have tabs and holes to attach sections together during forming.

The 2' length allows more flexibility in applications such as, short runs or where there is a crown in the road that must be followed. These frames are available with steel end plate, if required.

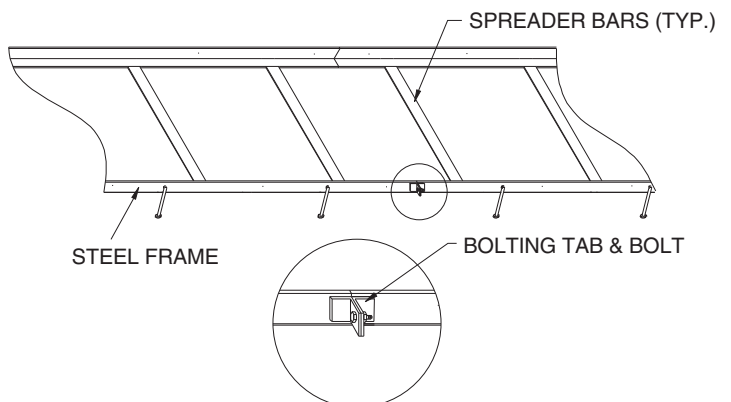
The USF 6560 cast iron frames are also used when grates are required to be bolted to frames. The 2' sections make the bolted set more manageable during handling. Security and tamper resistant bolting applications are available. Contact your sales or customer service representative for more information.



USF 6800 SERIES STEEL FRAMES

Frames are supplied in 10' lengths.

These frames are ideal for forming on long runs of trench. Frames are shipped in sets with a spreader bar welded to angles to give proper width for required grate. Stud anchors are included to tie into reinforcing. These frames have tabs and holes to bolt sections together during forming. Precut final lengths and turns are available. Frames can be supplied with painted or galvanized finish. These frames are available with steel end plate, if required. Contact your sales or customer service representative for more information.



TRENCH GRATE SOLUTIONS CONT.

1. Please specify catalog number when ordering.
2. Grates are furnished in 2" lengths.
3. Frames are available in 24" Cast Iron or Steel Angle.
4. Specify end pieces, if required.

5. All grates can be bolted to frame.
6. All grates are Heavy Duty Loading.
7. Solid covers are available in all sizes. Please specify solid when ordering.

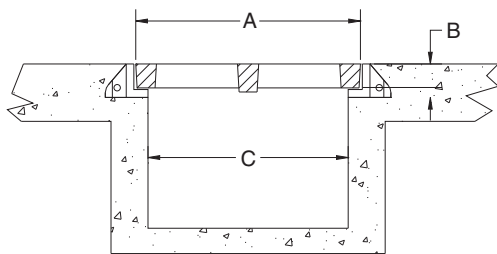
HEAVY DUTY STANDARDS

GRATE NUMBER	"A" WIDTH	"B" SEAT HEIGHT	"C" CLEAR OPENING	FLOW AREA
6451	8	1½	6	70
6452	10	1½	8	75
6453	12	1½	10	100
6454	14	1½	12	116
6455	17	1½	15	132
6456	20	1½	18	138
6457	23	1½	21	161
6458	26	1½	24	192
6461	30	2	27	212

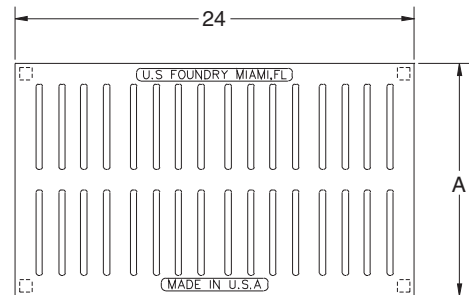
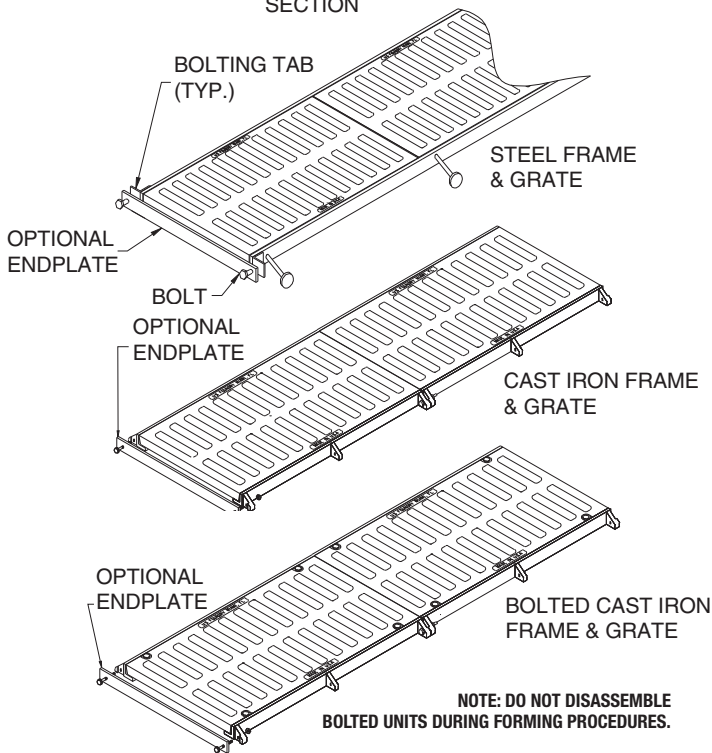
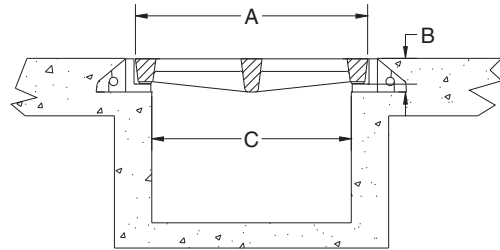
NARROW SLOTTED GRATES

GRATE NUMBER	"A" WIDTH	"B" SEAT HEIGHT	"C" CLEAR OPENING	FLOW AREA
6266	8	1½	6	30
6267	10	1½	8	35
6268	12	1½	10	50
6269	14	1½	12	60

All grates have 3/8" wide slots and are commonly used in pedestrian applications or where ADA compliance is required.



TYPICAL TRENCH SECTION



TRENCH GRATE SOLUTIONS CONT.

OTHER HEAVY DUTY OPTIONS

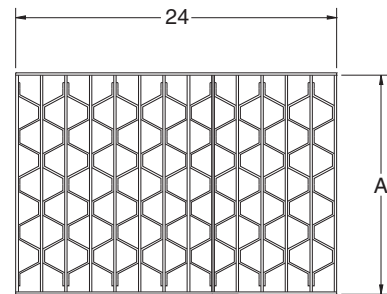
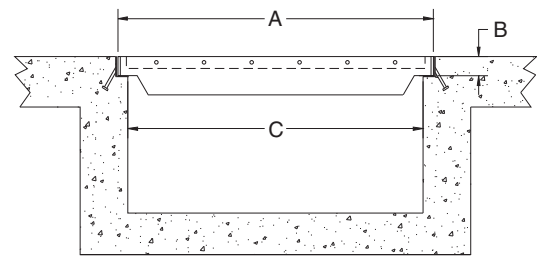
FRAME NUMBER	"A" GRATE NUMBER	"B" WIDTH	"C" SEAT HEIGHT	CLEAR OPENING	FLOW AREA
6500	6105	10	2 ³ / ₁₆	8	75
6500	6120	12	2 ³ / ₁₆	10	100
6510	6185	13	1 ³ / ₄	11	100
6505	6141	14	2	12	120
6500	6140	14	2 ³ / ₁₆	12	120
6515	6145	16	1 ¹ / ₂	14	130
6515	6226	19	1 ¹ / ₂	17	180
6545	6227	20	2 ¹ / ₄	18	160
6515	6235	24	1 ¹ / ₂	22	225
6530	6195*	26	1 ¹ / ₂	24	340
6500	6250	27	2 ¹ / ₈	25	220
6535	6209	27 ⁷ / ₈	2	24 ¹ / ₂	455
6515	6256	33	1 ¹ / ₂	31	370
6525	6180	39	25/8	37	270

*Frame and grate provided in 36" lengths.
 Highlighted items not restricted grate openings.

STEEL RETICULINE GRATES

GRATE NUMBER	"A" WIDTH	"B" SEAT HEIGHT	"C" CLEAR OPENING	FLOW AREA
6815	10	2	8	163
6816	12	2	10	204
6817	14	2	12	245
6818	17	2	15	306
6819	20	2	18	367
6820	23	2	21	428
6821	26	2	24	490
6822	30	2	27	551
6823	33	2	30	612
6824	36	2	33	673
6825	39	2	36	734
6826	45	2	42	857
6827	51	2	49	1000

Please note: Steel grates are an excellent alternative when maximum flow area is needed.

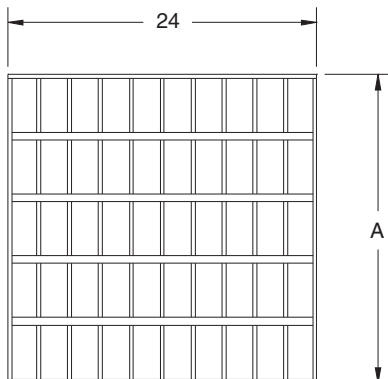
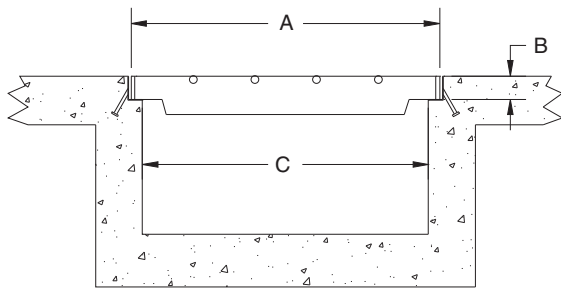


TRENCH GRATE SOLUTIONS CONT.

STEEL WELDED GRATES

GRATE NUMBER	"A" WIDTH	"B" SEAT HEIGHT	"C" CLEAR OPENING	FLOW AREA
6840	8	1½	6	100
6841	10	1½	8	134
6842	12	1½	10	168
6843	14	1½	12	201
6844	17	1½	15	252
6845	20	1½	18	302
6846	23	2	21	353
6847	26	2	24	403
6848	30	2	27	454
6849	33	2	30	504
6850	36	2	33	554
6851	39	2	36	605
6852	45	2	42	706
6853	51	2	49	823

Please note: Steel grates are an excellent alternative when maximum flow area is needed.



AIRPORT STEEL GRATES

GRATE NUMBER	"A" WIDTH	"B" SEAT HEIGHT	"C" CLEAR OPENING	FLOW AREA
6860	8	2	6	108
6861	10	2	8	144
6862	12	2	10	180
6863	14	2	12	216
6864	17	2	15	270
6865	20	2	18	324
6866	26	2	24	432
6867	34	2	31	558

Grates are 280psi aircraft loading. Grates bolted to steel frame. Grates are galvanized as a standard.

Note: Do not disassemble bolted units during forming procedures. This could cause bolts and holes not to line up after pouring.

