

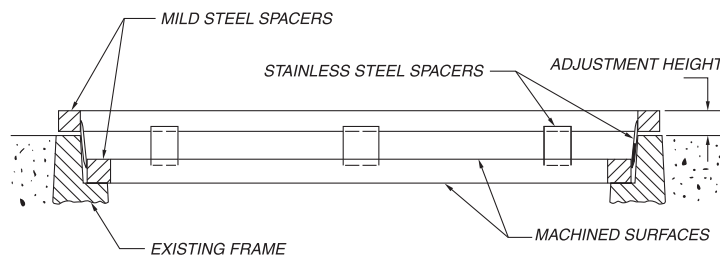
USF MANHOLE ADJUSTING RINGS

USF ADJUSTING RINGS ALLOW FAST, EASY AND EFFICIENT INSTALLATION. THERE ARE NO MANUAL ADJUSTMENTS OR WELDING REQUIRED AT INSTALLATION. USF ONE-PIECE CONSTRUCTION GIVES YOU THE STRENGTH AND DURABILITY TO PROVIDE YEARS OF DEPENDABLE SERVICE.

TYPE A: STEEL ADJUSTING RINGS

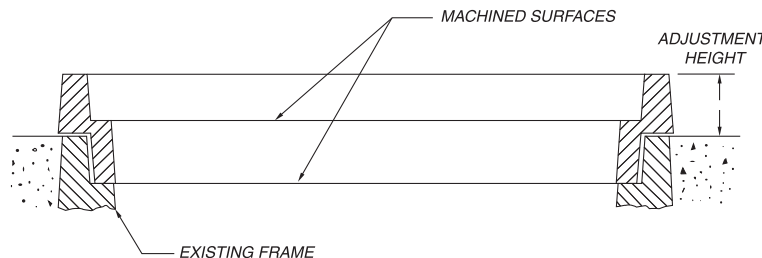
The versatile "Type A" Adjusting Ring is fabricated from steel and is used for any adjustment height desired, for any type and size ring and cover, or when quantities desired do not justify the cost of a pattern for a cast iron "Type B" Adjusting Ring. All bearing surfaces are machined to insure proper fit and prevent covers from rattling.

ALL ADJUSTING RINGS ARE MADE IN ONE CONTINUOUS PIECE TO MINIMIZE INFILTRATION OF WATER.



TYPE B: CAST IRON ADJUSTING RINGS

The "Type B" Adjusting Ring is made from cast iron and is used when the adjustment height is 1" thicker than the cover seat. This adjusting ring is restricted to specific adjustment heights and is limited to certain standard size rings and covers. Please contact our Customer Service Dept. for a recommendation on your particular application. All bearing surfaces are machined to insure proper fit and prevent covers from rattling.



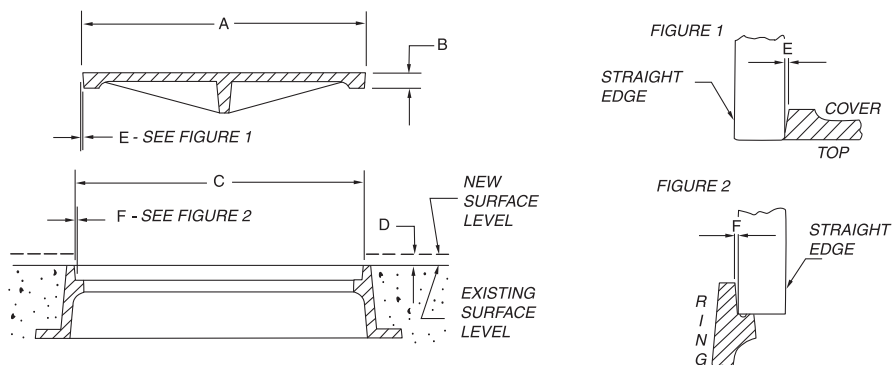
USF MANHOLE ADJUSTING RINGS

STANDARD ADJUSTING RINGS

USF NO.	COVER DIAMETER	COVER THICKNESS	HEIGHT ADJUSTMENT	FITS WITH USF RING NO.
2330	22 ³ / ₄	2	2 ⁵ / ₈	240, 310, 355, 420, 465, 485
2332	31 ⁵ / ₁₆	1 ³ / ₈	2	651, 652
2333	31 ⁵ / ₁₆	1 ³ / ₈	3	651, 652
2334	23 ¹ / ₂	1	1 ¹ / ₂	571, 664, 668, 669
2335	23 ¹ / ₂	1	2	571, 664, 668, 669
2336	23 ³ / ₄	1 ¹ / ₄	2	170, 195, 360, 385, 630
2337	23 ¹ / ₄	1	1 ¹ / ₂	361
2339	22 ³ / ₄	2	2 ¹ / ₄	240, 310, 355, 420, 465, 485
2340	23 ³ / ₄	1 ¹ / ₄	1 ³ / ₄	170, 195, 360, 385, 630
2341	25 ³ / ₄	1	2	152, 153
2342	25 ³ / ₈	1 ¹ / ₂	2	480
2343	25 ³ / ₄	1	1 ¹ / ₂	152, 153
2344	22 ³ / ₄	2	4	240, 310, 355, 420, 465, 485
2347	23 ¹ / ₂	2	1 ¹ / ₄	715
* 1" ADJRING-32	22 ³ / ₄	2	1	240, 310, 355, 420, 465, 485
* 1" ADJRING-33A	23 ³ / ₄	1 ¹ / ₄	1	170, 195, 360, 385, 630
USF NO.	COVER DIAMETER	COVER THICKNESS	HEIGHT ADJUSTMENT	FITS WITH
* 1" ADJRING	22 3/4	1 3/4	1	192, 193
* 1 1/2" ADJRING	22 3/4	1 3/4	1 1/2	
2305	22 3/4	1 3/4	2	
2306	22 3/4	1 3/4	2 1/2	
2307	22 3/4	1 3/4	3	

*TYPE 'A' STEEL ADJUSTING RING

TO ORDER ALL OTHERS, SIMPLY SUPPLY THE FOLLOWING INFORMATION AND SPECIFY THE TYPE ADJUSTING RING NEEDED.



- Dimension A: Diameter of manhole cover at the top edge
- Dimension B: Thickness of cover at the outside edge
- Dimension C: Inside diameter of the manhole ring at the top of the ring
- Dimension D: The amount of increased adjustment height needed for resurfacing
- Dimension E: Cover taper as measured in Figure 1
- Dimension F: Ring taper as measured in Figure 2

NOTE: FOR USF CASTING, SIMPLY GIVE THE USF RING NUMBER AND/OR USF COVER LETTER DESIGNATION AND DIMENSIONS A, B AND D.