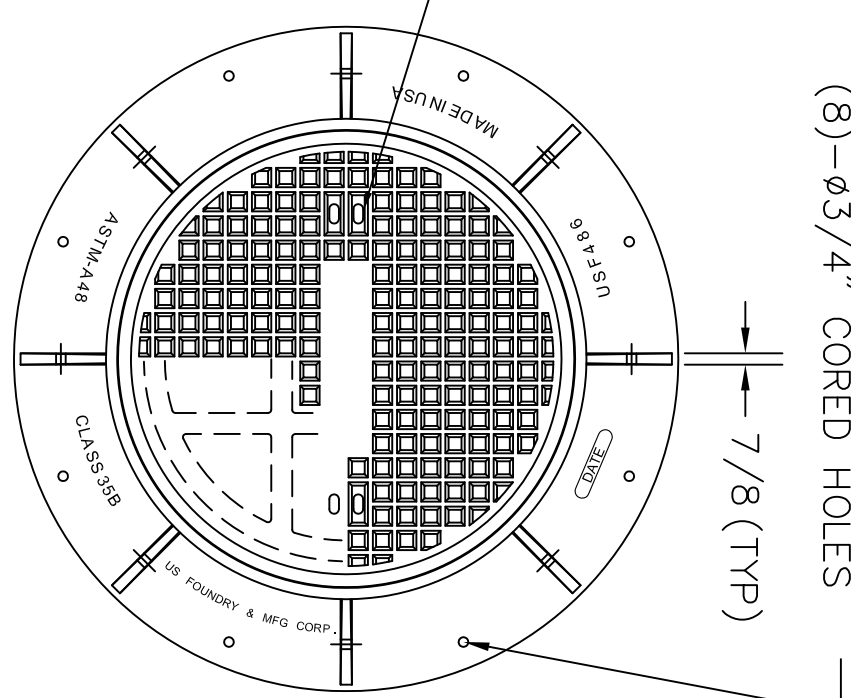


(4) - 3/4 X 1 1/2
SLOTTED HOLE
(SEE DETAIL)

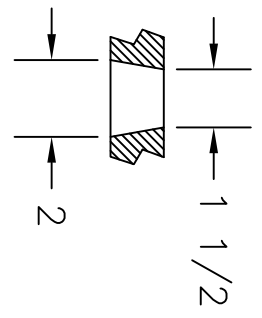
(8) - 3/4" CORED
HOLES

(8) - 3/4" CORED HOLES



7/8 (TYP)

SLOTTED HOLE DETAIL



US FOUNDRY & MFG. CORP.
8351 NW 93rd Street, Medley, FL 33166-2025
ph: 1-800-432-9709; fax: 305-887-9429
www.usfoundry.com
© 2010 US Foundry & Mfg. Corp. All Rights Reserved

USF 486 RING & CV COVER

LOAD CLASSIFICATION:	Heavy Duty
MATERIAL:	ASTM-A48 GRAY IRON CLASS35B
Ring No:	8020157
Wght:	530
SCALE:	3/4"=1"
Cover No:	360
DATE:	