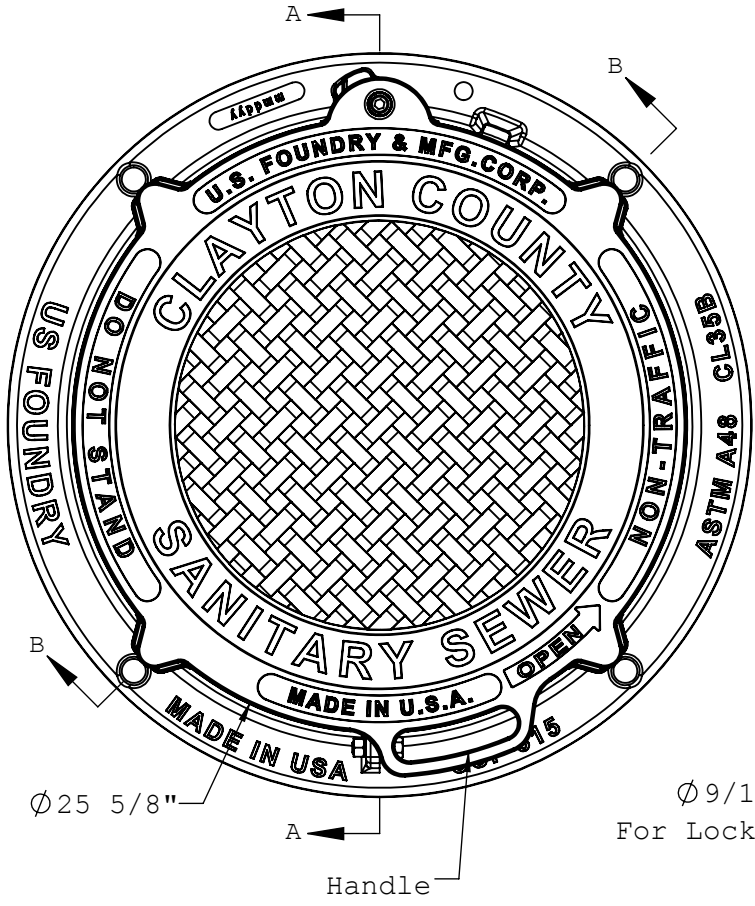


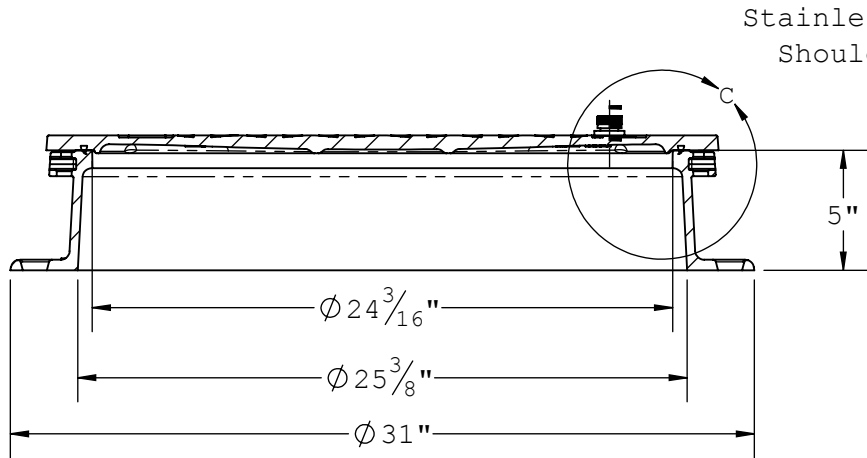
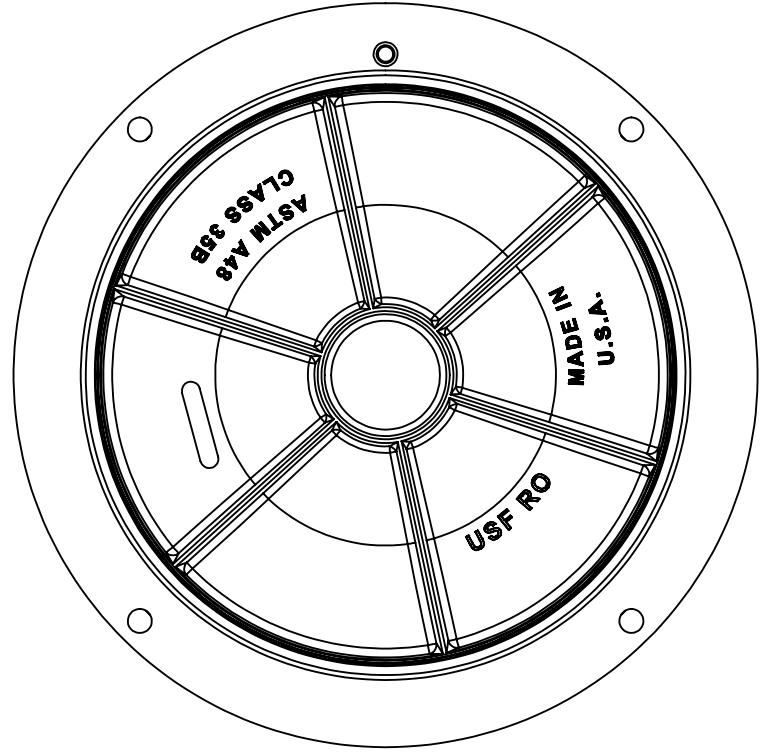
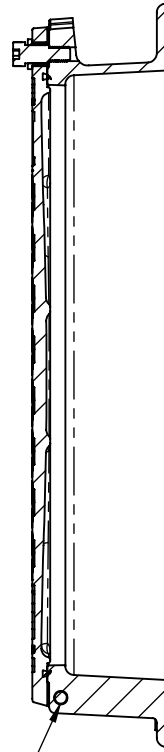
THE INFORMATION CONTAINED IN THIS DRAWING IS THE SOLE PROPERTY OF U.S. FOUNDRY & MANUFACTURING CORP. ANY REPRODUCTION IN PART OR AS A WHOLE WITHOUT THE WRITTEN PERMISSION OF U.S. FOUNDRY & MANUFACTURING CORP. IS PROHIBITED. U.S. FOUNDRY & MANUFACTURING CORP. RESERVES THE RIGHT TO MAKE MODIFICATIONS TO DESIGN WITHOUT PRIOR NOTICE. DRAWING IS UNCONTROLLED WHEN PRINTED. WEIGHTS AND DIMENSIONS ARE PROVIDED FOR REFERENCE ONLY. © 2014 US FOUNDRY AN EAGLE MANUFACTURING COMPANY



Ø 25 5/8"

Ø 9/16" Hole
For Lock Device

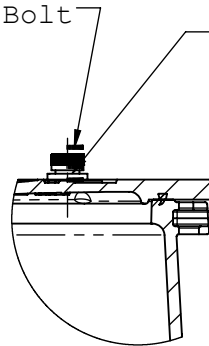
SECTION A-A
SCALE 1 : 8



SECTION B-B
SCALE 1 : 8

Stainless Steel
Shoulder Bolt

Bronze
Bushing



DETAIL C
SCALE 1 : 6

8351 NW 93rd Street
Medley, FL, 33166-2025
ph: 1-800-432-9709
fax: 305-887-9429
www.usfoundry.com

US FOUNDRY
AN EAGLE MANUFACTURING COMPANY © 2014 All Rights Reserved

USF 315 Ring & RO Cover

LOAD CLASSIFICATION:		Light Duty	
MATERIAL:		Gray Cast Iron ASTM-A48 Class 35B	
ITEM:	BAAN #	DRAWING	
Ring	8021483	DATE	
Cover	8016007	1/5/2015	
Assembly	8022538	DRAWN BY	
		ULS	
REV	0	DATE	QUOTE #

Customer Drawing