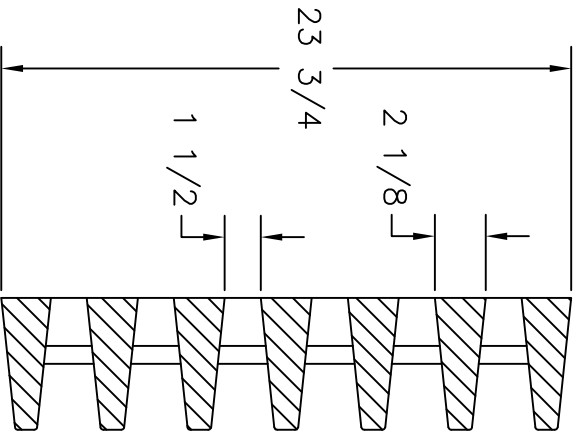
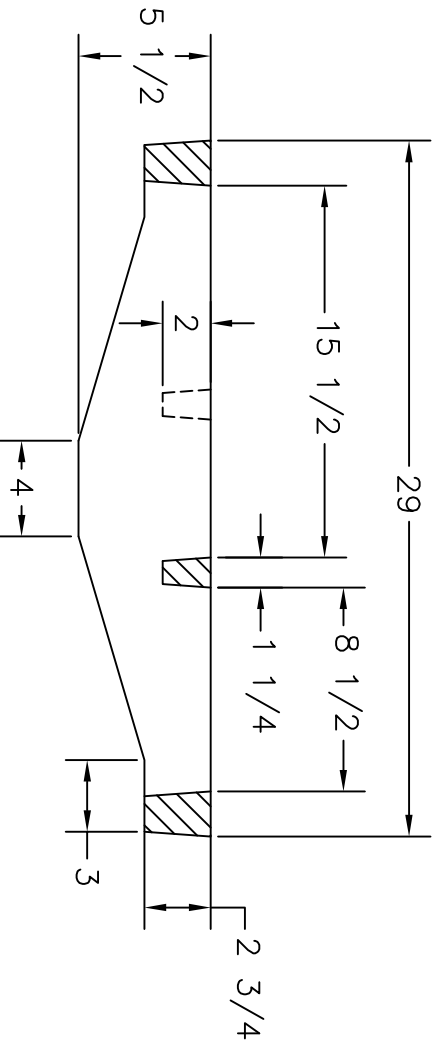
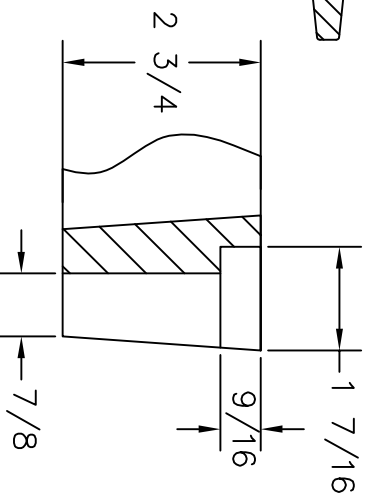


R3/4



**Bolting Application:**  
 Use  $\phi 5/8"$  X  $3 1/2"$ (\* ) long S.S.  
 Hex head Bolts with  $5/8"$  S.S.  
 SAE washers  
 \* - Length may vary due  
 to installation



**U.S. FOUNDRY & MFG. CORP.**  
 8351 NW 93rd Street, Medley, FL 33166-2025  
 ph: 1-800-432-9709; fax: 305-887-9429  
 www.usfoundry.com  
 © 2011 US Foundry & Mfg. Corp. All Rights Reserved

**USF 6257 Grate**

LOAD CLASSIFICATION: Heavy Duty	FLOW AREA=205(in <sup>2</sup> )
MATERIAL: ASTM-A48 GRAY IRON CLASS35B	SCALE: 1/8"=1"
Grate No: 8070144	DATE: 05-09-11
WGHT: 400	DRN. BY: ULS
UNLESS OTHERWISE NOTED WEIGHT IS IN POUNDS AND APPROXIMATED	
REV: 0	DATE: 00-00-00
REV BY:	QUOTE#